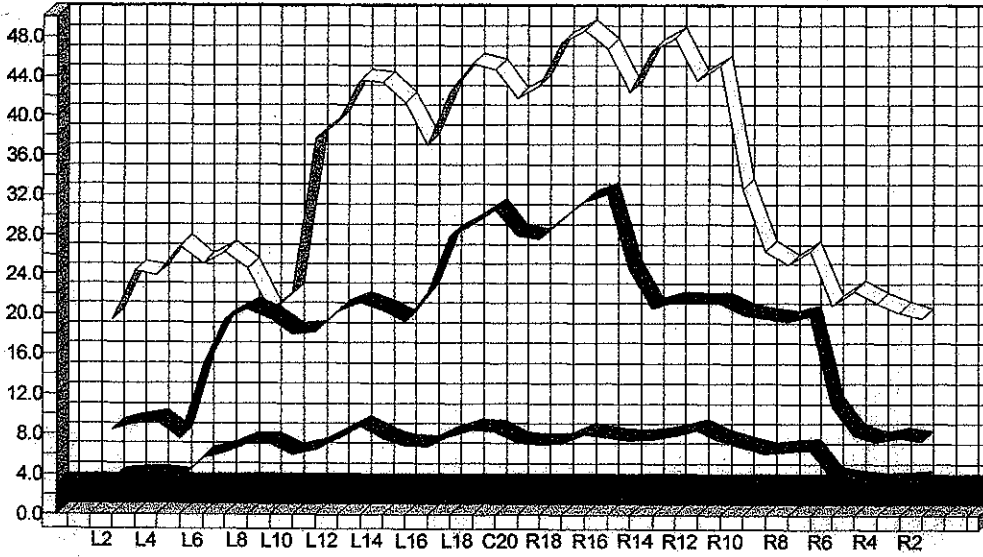


Brunswick Computer Lane Monitor™ Lane Dressing Analysis

	Center Name	Lane #	Distance	Date	Comment
1	Keila i Mjódd	6	36.0	12/04/00	Program 2
2	Keila i Mjódd	6	15.0	12/04/00	Program 2
3	Keila i Mjódd	6	25.0	12/04/00	Program 2

	1	2	3
L2	3.5	19.4	8.4
L3	3.7	24.3	9.0
L4	3.8	23.9	9.3
L5	3.5	26.9	7.8
L6	5.6	25.1	14.9
L7	6.2	26.3	19.4
L8	7.1	24.6	20.5
L9	7.1	20.1	19.6
L10	6.0	22.0	18.0
L11	6.5	37.7	18.2
L12	7.6	39.4	20.3
L13	8.8	43.6	21.1
L14	7.6	43.4	20.4
L15	6.9	41.3	19.2
L16	6.8	37.1	22.1
L17	7.8	42.5	27.9
L18	8.5	45.3	29.1
L19	8.3	44.7	30.6
C20	7.2	41.8	28.0
R19	7.0	43.1	27.6
R18	7.1	47.4	29.5
R17	8.0	48.7	31.4
R16	7.7	46.8	32.2
R15	7.4	42.3	24.5
R14	7.5	46.7	20.6
R13	7.9	47.9	21.2
R12	8.5	43.6	21.1
R11	7.4	45.1	21.1
R10	6.8	32.7	20.0
R9	6.2	26.4	19.6
R8	6.4	25.0	19.3
R7	6.5	26.4	19.8
R6	3.7	20.9	10.9
R5	3.4	22.4	8.0
R4	3.1	21.1	7.3
R3	3.2	20.2	7.7
R2	3.4	19.6	7.4



7 Pin Side

Board Number

First Tape Reading
10 Pin Side

1/4
2002

DBA PHOENIX™ Program Settings

MENU DESCRIPTION	OPTION	PROGRAM #2	CHANGE	CHANGE	CHANGE
CLEAN (1) OIL PATTERN DISTANCE (FEET)	WIDTH (3)	3	3	3	3
SIMULTANEOUS (1) FORWARD SHIFT TO 2nd SPEED	SEPARATE (2)	1	1	1	1
START CLEAN FORWARD SHIFT TO 2nd SPEED	RANGE	0	0	0	0
SPRAY "ON" TIME (HITS)	(HITS)	3	4	4	4
SPRAY "OFF" TIME (HITS)	(HITS)	12	12	12	12
LAST SPRAY DISTANCE (FEET)	(FEET)	40	45	45	44

OIL PATTERN DISTANCE (FEET)		35	40 *	38 *	38 40
FORWARD SHIFT TO 2nd SPEED		1	12 *	12	6
FORWARD SHIFT TO 3rd SPEED		35	40 *	38	38 40
RT 1-5 OIL FORWARD (INCHES)		36	180 *	192 *	180 180
RT 5-10 OIL FORWARD (INCHES)		36	300 *	300	240
RT 10-15 OIL FORWARD (FEET)		29	30 *	30	28
RT 15-20 OIL FORWARD (FEET)		29	30 *	30	28
LF 1-5 OIL FORWARD (INCHES)		36	180 *	192 *	180
LF 5-10 OIL FORWARD (INCHES)		60	300 *	300	240
LF 10-15 OIL FORWARD (FEET)		29	30 *	30	28
LF 15-20 OIL FORWARD (FEET)		29	30 *	30	28

RETURN SHIFT TO 2nd SPEED	IN TO	8	24	24	24
RETURN SHIFT TO LOW SPEED	IN TO	1	6	6	6
RT 1-5 OIL REVERSE (INCHES)		00	0	0	120
RT 5-10 OIL REVERSE (INCHES)		00	140 *	140	180 *
RT 10-15 OIL REVERSE (FEET)		8	22	22	22
RT 15-20 OIL REVERSE (FEET)		8	32	32	32
LF 1-5 OIL REVERSE (INCHES)		00	0	0	120
LF 5-10 OIL REVERSE (INCHES)		00	140	140	180
LF 10-15 OIL REVERSE (FEET)		8	22	22	22
LF 15-20 OIL REVERSE (FEET)		8	32	32	32
ADD OIL RT 1-5 (HITS)		00	0	0	0
ADD OIL RT 5-10 (HITS)		00	0	0	0
ADD OIL LFT 1-5 (HITS)		00	0	0	0
ADD OIL LFT 5-10 (HITS)		00	0	0	0

*